



The Role of Prophylactic Lymph Node Dissection in Patients with Intrahepatic Cholangiocarcinoma

Satoh D*, Matsukawa H, Araki H and Shiozaki S

Department of Gastroenterological Surgery, Hiroshima City Hiroshima Citizens Hospital, Japan

Abstract

Purpose: We investigated the role of prophylactic lymph node dissection (LND) in patients with intrahepatic cholangiocarcinoma (ICC).

Methods: A retrospective analysis was performed evaluating the impact on survival of prophylactic LND and preoperative risk factors for histological lymph node metastasis (LNM) in a cohort of 49 patients with ICC of the mass-forming type, who underwent curative resection between 1995 and 2013.

Results: There were no differences in both disease-free survival (DFS) and overall survival (OS) between the patients without LND and the patients with LND who did not have LNM. Multivariate analysis revealed that serum CA19-9 level >150 U/mL and LN size >5 mm on preoperative computed tomography (CT) were the significant preoperative risk factors for LNM. None of the patients with LN size <5 mm on preoperative CT and serum CA19-9 level ≤150 U/mL had LNM.

Conclusions: Prophylactic LND did not significantly improve DFS or OS in the present study. Regional LND could be omitted for patients with LN size <5 mm in preoperative CT and serum CA19-9 level ≤150 U/mL who are unlikely to have LNM.

Keywords: Intrahepatic cholangiocarcinoma; Prophylactic lymph node dissection; Lymph node size; Serum CA 19-9 level

OPEN ACCESS

*Correspondence:

Daisuke Satoh, Department of Gastroenterological Surgery, Hiroshima City Hiroshima Citizens Hospital, 7-33 Motomachi, Naka-ku, Hiroshima, Japan, Tel: +81-82-221-2291; Fax: +81-82-223-5514;

E-mail: ddds4863@gmail.com

Received Date: 10 Jun 2016

Accepted Date: 29 Jun 2016

Published Date: 05 Jul 2016

Citation:

Satoh D, Matsukawa H, Araki H, Shiozaki S. The Role of Prophylactic Lymph Node Dissection in Patients with Intrahepatic Cholangiocarcinoma. Clin Surg. 2016; 1: 1067.

Copyright © 2016 Satoh D. This is an open access article distributed under the Creative Commons Attribution License, which permits unrestricted use, distribution, and reproduction in any medium, provided the original work is properly cited.

Introduction

Although intrahepatic cholangiocarcinoma (ICC) is a relatively rare tumor, accounting for 10–15% of all primary liver cancer [1,2], the incidence of this disease has steadily increased in both Japan and throughout the world [3-5]. The prognosis of ICC is dismal, with an estimated median survival of only 18–19 months and an estimated 5-year survival rate between 25–40% [6-8]. Curative hepatic resection is the only effective treatment for ICC. Meanwhile, the role of lymph node dissection (LND) is still unclear, despite lymph node metastasis (LNM) having been reported to be a significant risk factor for poor outcome [9-11]. Some institutions advocate the routine performance of LND for ICC [12]. On the other hand, other institutions consider selective LND and limited application of LND to be reasonable because the prognosis of patients with LNM is poor even if systematic LND is performed [13,14]. The efficacy of LND is still controversial regarding both treatment for ICC patients with LNM, and prophylactic treatment for ICC patients without LNM. It is desirable for routine and systematic LND to be avoided if possible, especially in the case of prophylactic LND performed in patients without LNM, because performance of LND has been shown to cause increased operative morbidity compared with patients who do not undergo LND [15,16]. Another problem is that preoperative imaging assessment of LNM is quite difficult [17-19], although LNM is considered to be the most important prognostic factor for survival of patients with ICC [9-11]. Accurate preoperative determination of LNM status is important, considered that routine systematic LND could possibly be omitted in patients without LNM. Therefore, the purposes of the present study were to investigate the efficacy of prophylactic LND in ICC patients without LNM, and to evaluate which clinicopathological factors might be associated with the accurate determination of LNM status.

Patients and Methods

Patients

We retrospectively analyzed 64 patients with ICC who underwent resection in our institution from January 1995 to December 2013. ICC was defined as adenocarcinoma arising from the second

Table 1: Demographics and clinicopathological characteristics.

	LND(-) (n = 11)	LND(+)-LNM(-) (n = 28)	p value
Age (years)	65.9 ± 2.9	67.8 ± 1.8	0.590
Gender (male/female)	5 / 6	13 / 15	0.956
ICG15 (%)	8.3 ± 2.1	9.7 ± 1.1	0.717
CA19-9 (U/mL)	24.5 ± 483.5	607.6±299.9	0.312
Tumor size (cm)	3.8 ± 0.8	6.0 ± 0.5	0.031
Tumor number			
Single	11	23	0.133
Multiple	0	5	
Location of tumor			
Right lobe	4	16	0.243
Left lobe	7	12	
LN swelling (≥5 mm) on preoperative CT, n (%)	0 (0%)	8 (28.6%)	0.014
Differentiation, n (%) Well Moderate Poor	3 (27.2 %) 5 (45.6 %) 3 (27.2 %)	8 (28.6 %) 13 (46.4 %) 7 (25.0 %)	0.989
Vascular invasion, n (%)	2 (18.1 %)	6 (21.4 %)	0.820
Satellite nodule, n (%)	6 (54.5 %)	22 (78.6 %)	0.085
pTNM stage I/II/III/IVa	2 / 3 / 5 / 1	1 / 3 / 18 / 6	0.218

CA19-9: Carbohydrate 19-9; LN: Lymph Node; LND: Lymph Node Dissection; LNM: Lymph Node Metastasis; CT: Computed Tomography; TNM: Tumor-node-metastasis

or greater peripheral branches of the intrahepatic bile ducts. Patients with combined hepatocellular carcinoma and cholangiocarcinoma were excluded from this study. Six patients underwent only laparotomy due to peritoneal dissemination, 2 patients were revealed to have paraaortic lymph node metastasis, and 2 patients were not considered to have undergone radical surgery because of positive surgical margins by pathological examination. Five patients were lost to follow-up. Therefore, the 49 remaining patients who underwent curative resection were enrolled in the present study. Of the 49 patients who underwent curative resection, 38 patients underwent LND, and 11 did not [LND(-) group]. Of the 38 patients who underwent LND, 28 patients did not show histological LNM [LND(+)-LNM(-) group], and 10 patients had histological LNM [LND(+)-LNM(+)]. To evaluate the efficacy of prophylactic LND in ICC patients, we compared the disease-free survival (DFS) and overall survival (OS) rates between the LND(-) group and the LND(+)-LNM(-) group. The study protocol was approved by the Clinical Research Ethics Committee of our hospital. Written informed consent which permit was obtained from all patients in the study.

Preoperative diagnosis

Preoperative computed tomography (CT) was performed to evaluate the location, size, and number of the tumors. In cases of lymph nodes measuring >5 mm in diameter on CT, we considered the possibility of LNM and determined LND should be performed. Meanwhile, when LN size was <5 mm on preoperative CT, the decision to perform LND was left to the surgeon's discretion.

Surgical technique

Patients were excluded from surgical resection in cases of peritoneal carcinomatosis or extrahepatic metastasis confirmed at frozen section during surgery. Routine bile duct resection was not performed with LND. LND of the regional LNs was classified according to the Japanese Society of Biliary Surgery (JSBS) classification [20]. We harvested the LNs of the hepatoduodenal ligament (12h, 12a, 12p, 12b), the proper artery (8), and the posterior surface of the pancreatic head (13) during the surgery. In cases of tumor located in the left

lobe, we performed sampling dissection of the LNs of the left gastric artery (7), and the LNs along the lesser curvature of the stomach, and around the cardia in addition to the above-mentioned regional LND. The presence of LNM was not regarded as a contraindication to surgical resection.

Statistics

Continuous data were expressed as mean ± SD and were compared using the Mann-Whitney U test. Categorical data were assessed using the chi-squared test. Patient survival and recurrence rates were estimated by the Kaplan-Meier method, and differences between survival curves were tested by the log-rank test. Multivariate analysis was performed according to the Cox proportional hazards model. Statistical analysis was carried out using JMP software (version 9.0; SAS Institute, Inc., Cary, NC, USA).

Results

Patient characteristics in the LND(-) and LND(+)-LNM(-) groups

The demographics and clinicopathological characteristics for patients in the LND(-) and LND(+)-LNM(-) groups are displayed in Table 1. There were no significant differences in age, gender, value of indocyanine green retention at 15 minutes (ICG15), serum CA19-9 level, tumor number, proportion of tumor locations, histological tumor differentiation grade, vascular invasion, or pTNM stage between the two groups, while tumor size was significantly larger, and the percentage of patients with LN swelling >5 mm on preoperative CT was higher in the LND(+)-LNM(-) group than in the LND(-) group.

Analysis of OS and DFS in the LND(-) and LND(+)-LNM(-) groups

The 1-, 3- and 5-year OS rates were 100.0, 80.0, and 64.6%, respectively, in the LND(-) group, and 88.6, 58.1, and 45.8%, respectively, in the LND(+)-LNM(-) group. There was no significant difference in OS rates between the two groups ($p = 0.353$) (Figure 1). The 1-, 3- and 5-year DFS rates were 63.6, 50.9, and 33.9%, respectively,

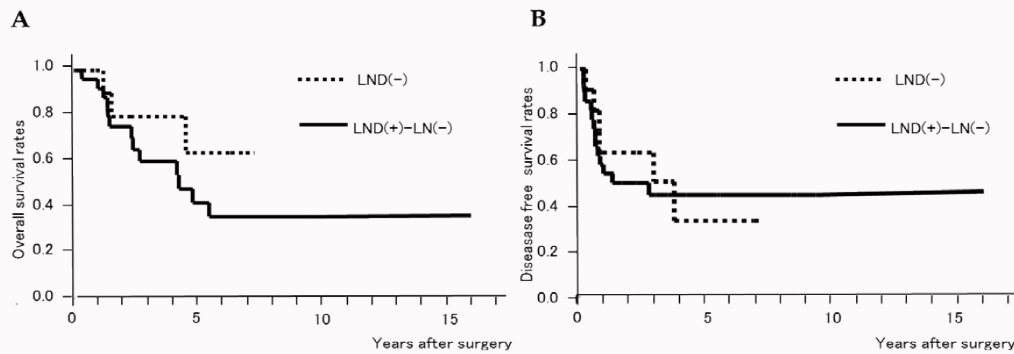


Figure 1: Overall survival and disease-free survival curves
 A: Survival curves of the LND(-) and LND(+)-LNM(-) groups. No significant difference was evident between the two groups ($p = 0.353$).
 B: Disease-free survival curves of LND(-) and LND(+)-LNM(-) groups. No significant difference was evident between the two groups ($p = 0.8634$).
 LN: Lymph Node; LND: Lymph Node Dissection

Table 2: Initial site of recurrence.

	LND(-) (n = 11)	LND(+)-LNM(-) (n = 28)
Liver	3	3
Liver and no. 16 LN	1	1
Peritoneum	0	3
Lung	1	1
Bone	1	3
Lung and bone	0	1
Local LN	0	2
Total	6 (54.5%)	14 (50.0%)

LN: Lymph Node; LND: Lymph Node Dissection; LNM: Lymph Node Metastasis

in the LND(-) group, and 54.6, 45.3, and 45.3% respectively, in the LND(+)-LNM(-) group. There was also no significant difference in DFS rates between the two groups ($p = 0.863$) (Figure 1).

Sites of initial recurrence

In the LND(-) group, recurrence occurred in 6 of 11 patients; in the LND(+)-LNM(-) group, recurrence occurred in 14 of 28 patients (Table 2). Although no local LN recurrence occurred in the LND(-) group, local LN recurrence was seen in 2 patients of the LND(+)-LNM(-) group. The most frequent recurrence site was the liver in both groups.

Uni- and multi-variate risk factor analysis for histological lymph node metastasis

Of the 38 patients who underwent LND, 10 patients had histological LNM. To identify risk factors for histological LNM, we performed uni- and multivariate analysis on preoperative data from the patients who underwent LND (n = 38). Univariate analysis revealed that serum CA19-9 levels >150 U/mL, which was a cut-off value calculated by receiver operating characteristic (ROC) analysis ($p = 0.001$), and LN size >5 mm on preoperative CT ($p = 0.0005$) were the significant risk factors for histological LNM (Table 3). Multivariate analysis revealed that serum CA19-9 levels >150 U/mL ($p = 0.005$) and LN size >5 mm on preoperative CT ($p = 0.017$) were the significant risk factors for histological LNM (Table 3).

Association with the incidence of LNM and risk factors for LNM

We evaluated the incidence of histological LNM, dividing the patients into 4 groups by LN size (5 mm) and serum level of CA19-9

(150 U/mL) as preoperative independent risk factors of histological LNM (Table 4). It was revealed that none of the patients with LN size <5 mm in preoperative CT and serum CA19-9 level ≤150 U/mL had histological LNM among the ICC patients who underwent LND. Conversely, 78% of the patients with LN size >5 mm on preoperative CT and serum CA19-9 level >150 U/mL showed histological LNM.

Discussion

Although the incidence of LNM in ICC patients is high, reportedly ranging from 36 to 62% [21-31], and LNM is a strong predictor of worse long-term outcome after curative-intent resection of ICC, the role of LND is still controversial. Some authors have suggested that LND should be performed in all ICC patients to appropriately determine stage and to guide perioperative management [32]. Meanwhile, other authors have noted that LND was not effective in improving survival rates, and have recommended against routine LND [33,34]. Furthermore, as for prophylactic LND performed in patients without LNM, the impact on outcome has not been elucidated at all. The present retrospective study compared the OS and DFS rates between the patients who did not undergo LND and the patients who underwent LND but did not have LNM to clarify whether LND should be performed prophylactically in patients without LN involvement. The present study demonstrated that there was no significant difference between these two groups, which suggests that prophylactic LND does not contribute to either OS or DFS. Prophylactic LND seems to prevent local LN recurrence by removal of possible microscopic LNM both around the perihepatic LNs and at frequent sites of recurrence. However, the present study investigated the site of initial recurrence, and revealed that local LN recurrence had occurred even in the patients who underwent regional LND despite the fact that none of the patients who did not undergo LND had local LN recurrence. It has been discovered that intrahepatic recurrence is a common recurrence pattern in both the patients who undergo LND and those who do not undergo LND as previous study reported [35,36]. Another study found that patients who underwent LND but had no LNM appeared to have slightly worse survival rates than patients who did not undergo LND during the earlier portion of the follow-up period [37]. Similarly, in the current study, the patients who underwent LND but had no LNM seemed to have slightly worse survival rates than the patients who did not undergo LND, although the difference was not statistically significant. There may have been some bias regarding whether LND was performed in the patients with LN size <5 mm on preoperative CT. If prophylactic LND could be

Table 3: Uni- and multivariate analysis of preoperative risk factors for histological LNM.

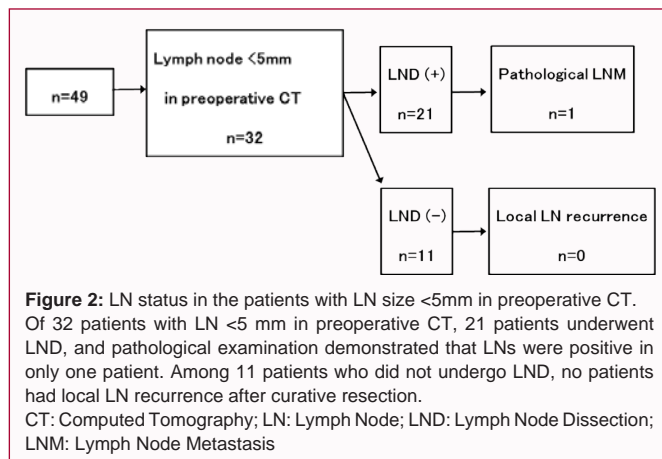
Factors	Univariate analysis			Multivariate analysis		
	OR	95%CI	p value	OR	95%CI	p value
Age >65 years	1.667	0.348-7.558	0.510			
Male gender	2.692	0.611-14.542	0.195			
CA19-9 >150 U/mL	14.667	2.825-116.642	0.001	18.919	2.301-427.561	0.005
Multiple tumors	4.6	0.963-23.638	0.056	4.931	0.451-120.183	0.196
Tumor size ≥5 cm	1.8	0.410-8.025	0.431			
Tumor location						
Left lobe	3.111	0.705-16.862	0.136			
Hilar	3.6	0.537-71.911	0.206			
LN size ≥5 mm on preoperative CT	22.5	3.434-451.177	0.0005	13.985	1.548-340.965	0.017

CA19-9: Carbohydrate 19-9; LN: Lymph Node; LNM: Lymph Node Metastasis; CT: Computed Tomography

Table 4: Incidence of histological LNM.

	Serum CA19-9 level	
	≤150 U/mL	>150 U/mL
LN size on preoperative CT		
< 5 mm	0 / 16 (0%)	1 / 5 (20%)
≥ 5 mm	2 / 8 (25%)	7 / 9 (78%)

CA19-9: Carbohydrate 19-9; LN: Lymph Node; LNM: Lymph Node Metastasis; CT: Computed Tomography



omitted in the patients without histological LNM, the problem is that preoperative diagnostic imaging techniques, including CT, MRI, and 18F-fluorodeoxyglucose positron emission tomography, would have difficulty in accurately detecting histological LNM preoperatively. Therefore, the present study investigated significant preoperative risk factors, not postoperative or histological factors, for histological LNM. The results revealed that LN size >5 mm on preoperative CT and serum CA19-9 level >150 U/mL were significant preoperative predictors of histological LNM. In the patients with LN size <5 mm on preoperative CT and serum CA19-9 level ≤150 U/mL among the patients who underwent LND, no patient had histological LNM. Conversely, in the patients with LN size >5 mm on preoperative CT and serum CA19-9 level >150 U/mL who showed histological LNM, the incidence of histological LNM was 78%. These two factors can be very useful for accurately diagnosing LN status. The present study had several limitations. The study was retrospective in nature, so there may have been some selection bias, especially in patients with LN size <5 mm on preoperative CT, because the performance of LND was left to the surgeon’s discretion in such patients. Another possible

limitation was quite a small sample size in this study. The small number of patients in some subsets may have resulted in a type error in assessing OS and DFS, so it is difficult to draw definite conclusion about the effect of prophylactic LND.

Conclusion

In conclusion, prophylactic LND did not improve survival significantly after curative-intent surgery for ICC, and did not prevent local recurrence in the present study. Systematic regional LND may be not suitable for patients with LN size <5 mm on preoperative CT and serum CA19-9 level ≤150 U/mL.

References

- Aljiffry M, Abdulelah A, Walsh M, Peltekian K, Alwayn I, Molinari M. Evidence-Based Approach to Cholangiocarcinoma: A Systematic Review of the Current Literature. *J Am CollSurg.* 2009; 208: 134–147.
- Bektas H, Schrem H, Kleine M, Tamac A, Vondran F, Uzunyayla S, et al. Primary Liver Tumours–Presentation, Diagnosis and Surgical Treatment. *Liver Tumors-Epidemiology, Diagnosis, Prevention and Treatment.* In Tech. 2013; 91–116.
- Ikai I, Arii S, Okazaki M, Okita K, Omata M, Kojiro M, et al. Report of the 17th nationwide follow-up survey of primary liver cancer in Japan. *Hepatol Res.* 2007; 37: 676–691.
- Endo I, Gonen M, Yopp AC, Dalal KM, Zhou Q, Klimstra D, et al. Intrahepatic cholangiocarcinoma: rising frequency, improved survival, and determinants of outcome after resection. *Ann Surg.* 2008; 248: 84–96.
- Dodson RM, Weiss MJ, Cosgrove D, Herman JM, Kamel I, Anders R, et al. Intrahepatic cholangiocarcinoma: management options and emerging therapies. *J Am Coll Surg.* 2013; 217: 736–750.
- Morimoto Y, Tanaka Y, Ito T, Nakahara M, Nakaba H, Nishida T, et al. Long-termsurvival and prognostic factors in the surgical treatment for intrahepatic cholangiocarcinoma. *J Hepatobiliary Pancreat Surg.* 2003; 10: 432–440.
- Konstadoulakis MM, Roayaie S, Gomatos IP, Labow D, Fiel M-I, Miller CM, et al. Fifteen-year, single-center experience with the surgical management of intrahepatic cholangiocarcinoma: operative results and long-term outcome. *Surgery.* 2008; 143: 366–374.
- Choi S-B, Kim K-S, Choi J-Y, Park S-W, Choi J-S, Lee W-J, et al. The prognosis and survival outcome of intrahepatic cholangiocarcinoma following surgical resection: association of lymph node metastasis and lymph node dissection with survival. *Ann Surg Oncol.* 2009; 16: 3048–3056.
- Nagorney DM, Donohue JH, Farnell MB, Schleck CD, Ilstrup DM. Outcomes after curative resections of cholangiocarcinoma. [*Arch Surg.*] 1993; 128: 871-877.

10. Kawarada Y, Yamagiwa K, Das BC. Analysis of the relationships between clinicopathologic factors and survival time in intrahepatic cholangiocarcinoma. *Am J Surg.* 2002; 183: 679-685.
11. Weber SM, Jarnagin WR, Klimstra D, DeMatteo RP, Fong Y, Blumgart LH. Intrahepatic cholangiocarcinoma: resectability, recurrence pattern, and outcomes. *J Am Coll Surg.* 2001; 193: 384-391.
12. Isaji S, Kawarada Y, Taoka H, Tabata M, Suzuki H, Yokoi H. Clinicopathological features and outcome of hepatic resection for intrahepatic cholangiocarcinoma in Japan. *J Hepatobil Pancreat Surg.* 1999; 6: 108-116.
13. Morine Y, Shimada M, Utsunomiya T, Imura S, Ikemoto T, Mori H, et al. Clinical impact of lymph node dissection in surgery for peripheral-type intrahepatic cholangiocarcinoma. *Surg Today.* 2012; 42: 147-151.
14. Lieser MJ, Barry MK, Rowland C, Ilstrup DM, Nagorney DM. Surgical management of intrahepatic cholangiocarcinoma: a 31-year experience. *J Hepatobil. Pancreat Surg.* 1998; 5: 41-47.
15. Shimada M, Yamashita Y, Aishima S, Shirabe K, Takenaka K, Sugimachi K. Value of lymph node dissection during resection of intrahepatic cholangiocarcinoma. *Br J Surg.* 2001; 88: 1463-1466.
16. El Rassi ZE, Partensky C, Scoazec JY, Henry L, Lombard Bohas C, Maddern G. Peripheral cholangiocarcinoma: presentation, diagnosis, pathology and management. *Eur J Surg Oncol.* 1999; 25: 375-380.
17. Kluge R, Schmidt F, Caca K, Barthel H, Hesse S, Georgi P, et al. Positron emission tomography with [18F]fluoro-2-deoxy-D-glucose for diagnosis and staging of bile duct cancer. *Hepatology.* 2001; 33: 1029-1035.
18. Seo S, Hatano E, Higashi T, Nakajima A, Nakamoto Y, Tada M, et al. Fluorine-18 fluorodeoxyglucose positron emission tomography predicts lymph node metastasis, P-glycoprotein expression, and recurrence after resection in mass-forming intrahepatic cholangiocarcinoma. *Surgery.* 2008; 143: 769-777.
19. Minagawa M, Ikai I, Matsuyama Y, Yamaoka Y, Makuuchi M. Staging of hepatocellular carcinoma: assessment of the Japanese TNM and AJCC/UICC TNM systems in a cohort of 13,772 patients in Japan. *Ann Surg.* 2007; 245: 909-922.
20. Surgery JSob. Classification of Biliary Tract Carcinoma. Japanese Society of Biliary Surgery (Second edn). Kanehara & Co. Ltd.: Tokyo, 2004.
21. Uenishi T, Hirohashi K, Kubo S, Yamamoto T, Yamazaki O, Kinoshita H. Clinicopathological factors predicting outcome after resection of mass-forming intrahepatic cholangiocarcinoma. *Br J Surg.* 2001; 88: 969-974.
22. Okabayashi T, Yamamoto J, Kosuge T, Shimada K, Yamasaki S, Takayama T, et al. A new staging system for mass-forming intrahepatic cholangiocarcinoma: analysis of preoperative and postoperative variables. *Cancer.* 2001; 92: 2374-2383.
23. Inoue K, Makuuchi M, Takayama T, Torzilli G, Yamamoto J, Shimada K, et al. Long-term survival and prognostic factors in the surgical treatment of mass-forming type cholangiocarcinoma. *Surgery.* 2000; 127: 498-505.
24. Kawarada Y, Yamagiwa K, Das BC. Analysis of the relationships between clinicopathologic factors and survival time in intrahepatic cholangiocarcinoma. *Am J Surg.* 2002; 183: 679-685.
25. Isa T, Kusano T, Shimoji H, Takeshima Y, Muto Y, Furukawa M. Predictive factors for long-term survival in patients with intrahepatic cholangiocarcinoma. *Am J Surg.* 2001; 181: 507-511.
26. Shirabe K, Shimada M, Harimoto N, Sugimachi K, Yamashita Y, Tsujita E, et al. Intrahepatic cholangiocarcinoma: its mode of spreading and therapeutic modalities. *Surgery.* 2002; 131: S159-S164.
27. Suzuki S, Sakaguchi T, Yokoi Y, Okamoto K, Kurachi K, Tsuchiya Y, et al. Clinicopathological prognostic factors and impact of surgical treatment of mass-forming intrahepatic cholangiocarcinoma. *World J Surg.* 2002; 26: 687-693.
28. Uenishi T, Yamazaki O, Yamamoto T, Hirohashi K, Tanaka H, Tanaka, et al. Serosal invasion in TNM staging of mass-forming intrahepatic cholangiocarcinoma. *J Hepatobiliary Pancreat Surg.* 2005; 12: 479-483.
29. Morimoto Y, Tanaka Y, Ito T, Nakahara M, Nakaba H, Nishida T, et al. Long-term survival and prognostic factors in the surgical treatment for intrahepatic cholangiocarcinoma. *J Hepatobiliary Pancreat Surg.* 2003; 10: 432-440.
30. Nakagawa T, Kamiyama T, Kurauchi N, Matsushita M, Nakanishi K, Kamachi H, et al. Number of lymph node metastases is a significant prognostic factor in intrahepatic cholangiocarcinoma. *World J Surg.* 2005; 29: 728-733.
31. Ohtsuka M, Ito H, Kimura F, Shimizu H, Togawa A, Yoshidome H, et al. Results of surgical treatment for intrahepatic cholangiocarcinoma and clinicopathological factors influencing survival. *Br J Surg.* 2002; 89: 1525-1531.
32. Ercolani G, Grazi GL, Ravaioli M, Grigioni WF, Cescon M, Gardini A, et al. The role of lymphadenectomy for liver tumors - Further considerations on the appropriateness of treatment strategy. *Ann Surg.* 2004; 239: 202-209.
33. Shirabe K, Mano Y, Taketomi A, Soejima Y, Uchiyama H, Aishima S, et al. Clinicopathological prognostic factors after hepatectomy for patients with mass-forming type intrahepatic cholangiocarcinoma: Relevance of the lymphatic invasion index. *Ann SurgOncol.* 2010; 17: 1816-1822.
34. Li DY, Zhang HB, Yang N, Quan Y, Yang GS. Routine lymph node dissection may be not suitable for all intrahepatic cholangiocarcinoma patients: results of a monocentric series. *World J Gastroenterol.* 2013; 19: 9084-9091.
35. Miwa S, Miyagawa S, Kobayashi A, Akahane Y, Nakata T, Mihara M, et al. Predictive factors for intrahepatic cholangiocarcinoma recurrence in the liver following surgery. *J Gastroenterol.* 2006; 41: 893-900.
36. Nakagohri T, Asano T, Kinoshita H, Kenmochi T, Urashima T, Miura F, et al. Aggressive surgical resection for hilar-invasive and peripheral intrahepatic cholangiocarcinoma. *World J Surg.* 2003; 27: 289-293.
37. Choi SB, Kim KS, Choi JY, Park SW, Choi JS, Lee WJ, et al. The prognosis and survival outcome of intrahepatic cholangiocarcinoma following surgical resection: association of lymph node metastasis and lymph node dissection with survival. *Ann SurgOncol.* 2009; 16: 3048-3056.