



Massive Hemothorax Draining into the Left Lung and Causing Hemoptysis

Garcia Franco CE^{1*}, Caballero E², Palmero JM³ and Reyes B^{1,2}

¹Department of General Thoracic Surgery, University Hospital Candelaria, Spain

²Department of General Surgery, University Hospital Candelaria, Spain

³Department of Pulmonology, University Hospital Candelaria, Spain

Keywords

Hemothorax; Hemoptysis; Bronchoscopy

Clinical Image

57 year old male with subpulmonary pleural effusion and hemoptysis. Left upper lobectomy 2 months before. Chest CT frontal (left) and sagittal (right) slices, showing a huge hemothorax, with two connected loculations. Chest CT (Figure 1) and thoracentesis confirmed a massive hemothorax. Left side picture shows a dark bleeding, coming from the left lower lobe segments, into the left main stem bronchus. Bronchoscopy showed a left sided dark bleeding (Figure 2, left). Right side picture confirmed a correct healing of the left upper lobe stump. Bronchopleural fistula was ruled out (Figure 2, right). Chest tube insertion cured the patient.



Figure 1: Chest CT frontal (left) and sagittal (right) slices, showing a huge hemothorax, with two connected loculations.

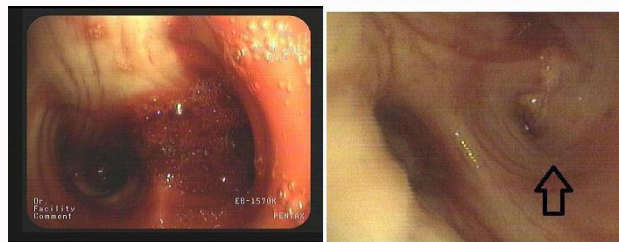


Figure 2: Left side picture shows a dark bleeding, coming from the left lower lobe segments, into the left main stem bronchus. Right side picture confirmed a correct healing of the left upper lobe stump.

OPEN ACCESS

*Correspondence:

Carlos E. García Franco, Department of General Thoracic Surgery, University Hospital Candelaria, Carretera del Rosario 145. 38010, Santa Cruz Tenerife, Spain, Tel: +34696464905; Fax: +34915439891; E-mail: c.garciafranco@hotmail.com

Received Date: 10 Sep 2019

Accepted Date: 20 Sep 2019

Published Date: 26 Sep 2019

Citation:

Garcia Franco CE, Caballero E, Palmero JM, Reyes B. Massive Hemothorax Draining into the Left Lung and Causing Hemoptysis. *Clin Surg.* 2019; 4: 2596.

Copyright © 2019 Garcia Franco CE. This is an open access article distributed under the Creative Commons Attribution License, which permits unrestricted use, distribution, and reproduction in any medium, provided the original work is properly cited.