



## LODDS was a Better Predictor for Lymph Node Status and was a Dependent Poor Prognostic Factor for Distal Extrahepatic Cholangiocarcinoma after Radical Surgical Resection

Wenqin Wang<sup>1</sup>, Xiang Chen<sup>2</sup> and Xiaodong He<sup>1\*</sup>

<sup>1</sup>Department of General Surgery, Peking Union Medical College, China

<sup>2</sup>Department of Food and Drug Administration, Wei Fang College Hospital, China

### Abstract

**Background:** Whether log of odds between the number of positive lymph node and the Number of Negative Lymph Node (LODDS) predict lymph node status and oncological outcomes for Distal Extrahepatic Cholangiocarcinoma (dECA) patients after curative resection remains rarely studied.

**Methods:** A 743 patients from SEER database between 2004 and 2014 who received curative Pancreatoduodenectomy (PD) were analyzed. We conducted Receiver Operating Characteristic (ROC) curve and univariate (Log-Rank) and multivariate (Cox regression) analysis to identify the diagnostic and prognostic roles of LODDS.

**Results:** LODDS was the effective variable with the area under the ROC curve (AUC) for prediction of 3-year survival (AUC=0.593) to predict the survival, we determined the optimum cut-off value of LODDS and LODDS<-0.94.

In multivariate analysis, LODDS (Hazard Ratio (HR)=0.738, 95% CI 0.574-0.949, P=0.018) was independent prognostic factor for OS.

**Conclusion:** LODDS was proved to be a good indicator predict for lymph node and survival as an independent indicator for OS in dECA after radical surgical resection.

**Keywords:** LODDS; Disease free survival; Distal extrahepatic carcinoma; Pancreatoduodenectomy

### Abbreviations

LODDS: Log of Odds between PLNs and NLNs; NLNs: Negative Lymph Node; OS: Overall Survival; dECA: Distal Extrahepatic Carcinoma; PD: Pancreatoduodenectomy

### Introduction

Distal Extrahepatic Carcinoma (dECA) account for up to 20% of Cholangiocarcinoma (CC), which was a separate entities considering the differences in the frequency, pathobiology and management comparing with carcinoma originated from the intrahepatic and perihilar bile duct epithelium [1-3]. CC is the commonest primary biliary and liver tumor worldwide secondary to Hepatocellular Carcinoma (HCC) [4]. The incidence of dECA varied among different countries, are about 6.69 per 100000 (men) and 2.98 per 100000 (women) in Japan, as compared with 0.42 per 100000 (men) and 0.36 per 100000 (women) in England and Wales, and 0.87 per 100000 (men) 0.80 per 1000000 (women) in Australia [5-7]. Though its incidence and mobility decreased in some countries, its prognosis remains dismal with a poor 1/5 year survival rate of only 28% to 37% and 6% to 11%, and a median overall survival of 4 to 8 months [4,5,8].

Until recently, Pancreatoduodenectomy (PD) were the only curative surgery for dECA while the radical surgery for intrahepatic and perihilar bile duct carcinoma is consist of liver resection [1,9]. Chemotherapy for CC had poor results and studies remains small and disparate [1]. However, the 5-year survival rates following resection of distal extrahepatic CC can only reach at 27% to 37% [1].

Lymph node metastases are well established independent predictors of survival following surgery [10-12]. Lymph nodal metastasis was found in 20 to 60 percent of the dECA patients, which

### OPEN ACCESS

#### \*Correspondence:

Xiaodong He, Department of General Surgery, Peking Union Medical College Hospital (East), Chinese Academy of Medical Sciences and Peking Union Medical College, No.1 Shuaifuyuan Wangfujing Dongcheng District, Beijing, 100730, China, Tel: 8613311360435; Fax: 01088331697;

E-mail: hexdpumch@sina.com

Received Date: 08 Apr 2019

Accepted Date: 22 May 2019

Published Date: 31 May 2019

#### Citation:

Wang W, Chen X, He X. LODDS was a Better Predictor for Lymph Node Status and was a Dependent Poor Prognostic Factor for Distal Extrahepatic Cholangiocarcinoma after Radical Surgical Resection. *Clin Surg.* 2019; 4: 2446.

**Copyright** © 2019 Xiaodong He. This is an open access article distributed under the Creative Commons Attribution License, which permits unrestricted use, distribution, and reproduction in any medium, provided the original work is properly cited.

was reported with the higher recurrence and dismal outcomes [9,13-19]. The up to date American Joint Committee on Cancer (AJCC) TNM classification system for distal cholangiocarcinoma, the lymph node classification defined it as N0 (negative lymph node), N1 ( $\geq 1$  lymph node metastasis) and N2 ( $\geq 4$  lymph node metastasis) based on the numbers of LN metastasis compared with the 7<sup>th</sup> edition simply categorize as presence and absence of lymph node metastasis [20]. However, growing evidence emphasizes the importance of the negative lymph node and Total Resected Lymph Node (TLNs) in addition to the positive lymph node emerging as potential system stratifying the LN involvement to better predicts the long-term outcome for many gastrointestinal tumors, including pancreatic, gastric, as well as biliary cancer [21-26]. The ratio of PLNs (Positive Lymph Node) to TLNs and Log of Odds between PLNs and NLNs (Negative Lymph Node) (LODDS) have emerged as potential alternative predictive indicator for outcomes and showed superiority to UICC/AJCC lymph node status-based assessment in many types of cancers [19,27-30]. The ratio of PLNs (Positive Lymph Node) to TLNs was studied in ovarian cancer and found to be superior to both PLN and RLN number in predicting survival after surgery for both intrahepatic and perihilar cholangiocarcinoma as well as other cancers [21,31-35]. However, the LNR showed some limitations in patients with all-PLNs and without PLNs, regardless of TLN [36]. Furthermore, LODDS is defined as  $\log\left(\frac{\text{the number of PLNs}+0.05}{\text{the number of negative nodes}+0.05}\right)$ , as an alternative LN staging method with prognostic value, has been validated in predicting survival for pancreatic cancer, breast cancer, lung cancer, cervical cancer and intrahepatic CC [18,19,23,27-30,37].

No data are available on the prognostic performance of LODDS in patients undergoing curative surgery for dECA and its comparison with other LN staging methods. The aim of this study was to evaluate and compare the prognostic value of the AJCC pN stage, PLN, PLR and LODDS in patients with dECA who underwent surgery with curative intent to identify the best LN staging method.

## Materials and Methods

### Patients

**Participants and criteria:** We identified dECA cases from the SEER program of the National Cancer Institute (<http://seer.cancer.gov/>). Inclusion criterion is that all patients who underwent surgery and are pathologically diagnosed with distal extrahepatic Cholangiocarcinoma cancer from the SEER database from 2004 to 2014. Exclusion criteria are as follows: unknown age of diagnosis; uncertain race; unknown marriage status; not determined grade; unknown stage; unspecified neoplasms; unknown tumor size; unknown or incomplete lymph node status. Finally, a total of 743 distal extrahepatic Cholangiocarcinoma cancer patients were included in this study. These patients are divided into two groups 2:1 consecutive (training cohort N=495; validation cohort, N=248).

### Clinical data collection

The Total Lymph Node count (TLN) was defined as the total number of lymph nodes examined histologically in each patient. After counting the number of involved lymph nodes, the lymph node ratio (PLR) was calculated as the ratio of the number of involved nodes to the TLN. The LODDS was calculated by  $\log\left[\frac{(\text{PLN} + 0.5)}{(\text{TLN}-\text{PLN}+ 0.5)}\right]$ .

### Variables and statistics

The categorical variables are shown as whole numbers and proportions, and the continuous variables presented as the Means (M)

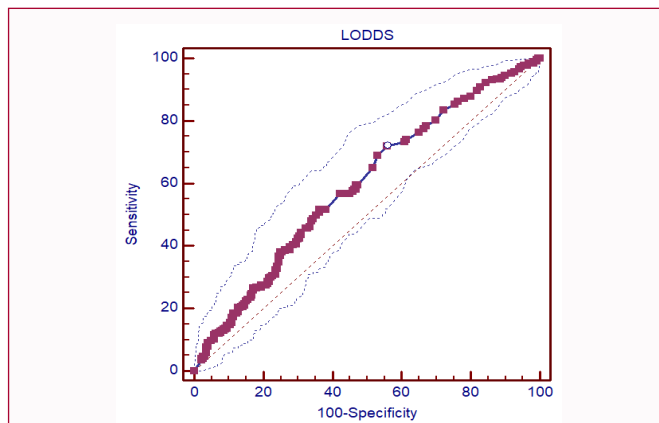


Figure 1: Optimal cutoff from ROC analysis.

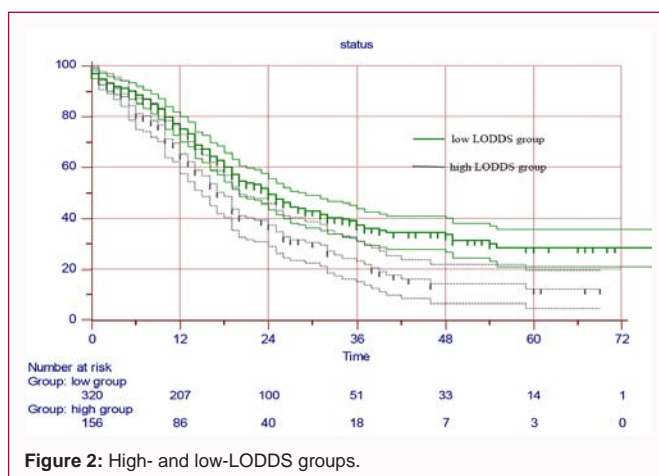


Figure 2: High- and low-LODDS groups.

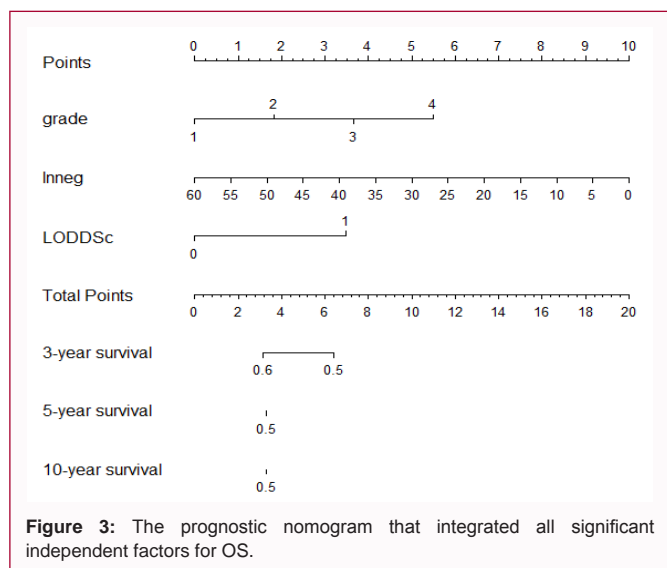
and Standard Deviation (SD) as appropriate. P values of  $<0.05$  (Two-sided) was defined as with statistical significance. IBM SPSS22.0 and R 3.4.2 version statistical software were used. To compare continuous variables that followed Gaussian distributions, t tests were used; the K-Independent-Samples Test (Kruskal WallisH (K) test) was used for those variables did not follow Gaussian distributions. To compare proportional variables, a Two Independent-Samples Test (Mann-Whitney U test) was used; The confounders were measured accurately using univariate Cox regression through an enter variable selection procedure. The regression models were based on Akaike's information criterion. We used univariate (Kaplan-Meier method and compared using log-rank test) and multivariate (Cox regressions) to evaluate the prognostic value and Survival curves.

Two approaches were used to evaluate and compare the predictive power of the different LN staging methods: one based on the survival ROC and the other based on the calculation of the Receiver Operating Characteristic (ROC) curve at a given time point [33,38]. The performance of the nomogram was measured by concordance index (C-index) and it is comparing nomogram-predicted survival probability with observed Kaplan survival probability. The larger the C-index, the more accurate was the prognostic prediction.

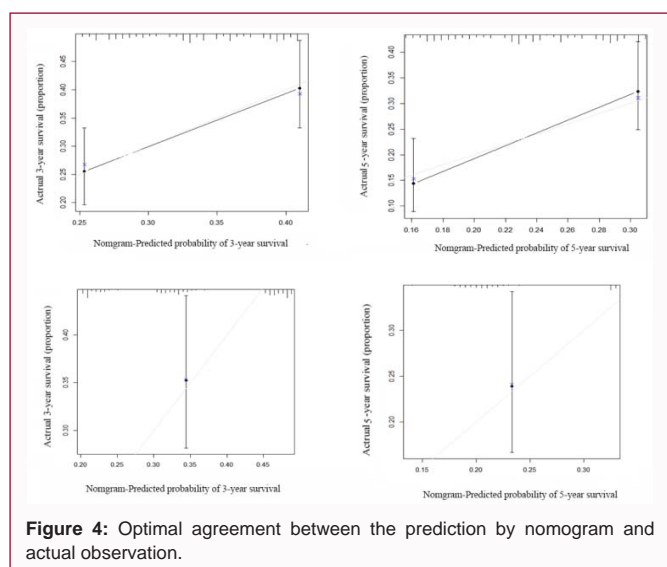
## Results

### The diagnostic power of LODDS for 3-year survival in dECA patients

In the training cohort from SEER, a total of 743 distal extrahepatic Cholangiocarcinoma cancer patients were included in this study.



**Figure 3:** The prognostic nomogram that integrated all significant independent factors for OS.



**Figure 4:** Optimal agreement between the prediction by nomogram and actual observation.

These patients are divided into two groups 2:1 consecutive (training cohort N=495; validation cohort, N=248). In order to facilitate the application of LODDS in clinical practice, we dichotomized LODDS into high LODDS and low LODDS based on the optimal cutoff from ROC analysis. In our training cohort, the optimal cutoff is -0.94 Figure 1. We further validated the predicting performance of binary LODDS in an independent external dataset.

Cut-Off values for LODDS, PLR, PLN, NLN, TLN were, <-0.94, <0.05, <1, <5, <5 respectively.

**Demographics and clinical characteristics of the 743 patients from SEER**

The demographic and clinicopathologic characteristics of patients in the training and validation cohorts are listed in Table 1.

**Survival analysis**

The results of the univariate and multivariate analysis are listed in Table 2. Univariate analyses demonstrated that grade, stage, PLN, NLN, TLN and LODDS were associated with OS. Multivariate analysis demonstrated that age, stage, RLN, PLN, PLR, NLN and LODDS were independent risk factors for OS (Table 2).

LODDS (Hazard Ratio (HR) =0.738, 95% CI 0.574-0.949, P=0.018) was independent prognostic factor for OS. Kaplan-Meier survival curves calculated median times to death after surgery being 18 months and 24 months in high- and low-LODDS groups, respectively Figure 2.

**Prognostic nomogram for OS**

The prognostic nomogram that integrated all significant independent factors for OS in the training cohort is shown in Figure 3. The C-index for OS prediction was 0.565 (95% CI, 0.612 to 0.538) in the training cohort and 0.640 (95% CI, 0.696 to 0.584) in the validation cohort. The calibration plot for the probability of survival at 3 or 5 year after surgery showed an optimal agreement between the prediction by nomogram and actual observation in the training cohort (Figure 4A and 4B) and in the validation cohort (Figure 4C and 4D), respectively.

**Discussion**

The present study suggests that grade, NLN, LODDS are independent prognostic factors of OS in cervical cancer after surgery. The nomogram is created based on these prognostic factors and was used to predict the 3 year and 5 year OS after surgery in the dECA. However, it did not show well predictive value as a nomogram. More detailed study are needed.

Extrahepatic Cholangiocarcinoma (EC) is a rare biliary duct cancer type cholangiocarcinoma. Analyses of SEER data ((SEER Program; <http://seer.cancer.gov/>)) from 1973 to 2012 showed that incidence of extrahepatic cholangiocarcinoma has remained stable (APC, 0.14% [Annual Percentage Change (APC), 2.3%] [39]. Despite the stable trend worldwide over the past few decades and recent developments in surgical techniques, its prognosis remains dismal even after curative surgery [40]. The reported 5 year survival rates after radical surgery are in the range of 16% to 52% for patients with distal extrahepatic cholangiocarcinoma [41]. PD is considered standard parts of curative resections in distal cholangiocarcinoma [12,42-45].

It is widely accepted that an increasing TLN enhances the accuracy of nodal staging for the number of PLNs is significant depending on the number of retrieved LNs. The AJCC has endorsed a ‘12-node minimum’ for distal cholangiocarcinoma to prevent inadequate staging. In present study, the minimum number of TLNs to be retrieved was determined by ROC curve based on the 3 year survival, >5 Lymph node was determined, while other study calculated it should be 9 and the AJCC has endorsed a ‘12-node minimum’ for distal cholangiocarcinoma [13]. Until now, the TLNs numbers were still controversial, however, the rationale for this number was not provided. Several authors have proposed a minimum TLN of 11 for distal cholangiocarcinoma [42,46,47]. Adsay et al., [48] reported that the TLN in patients after pancreaticoduodenectomy increased from 6 to 14 when a specific sampling technique was applied. According to US Surveillance, Epidemiology, and End Results data, the median TLN was only 5 in patients with cholangiocarcinoma [42]. What’s more, several authors have thus proposed other methods of LN staging in patients with pancreatobiliary malignancy. The PLR and LODDS are mathematical tools less influenced by the extension of LN dissection and are able to increase the LN staging reliability in different cancers, such as gastric cancer, colorectal cancer, and intrahepatic cholangiocarcinoma [21-26].

**Table 1:** Demographic and Clinicopathological characteristics of patients with distal Extrahepatic Cholangiocarcinoma between 2004 and 2014 in SEER database.

Demographic or Characteristics	All subjects (N=743)	Training cohort (N=495)	Validation cohort (N=248)	P value
Age at diagnosis (year)				0.159
x<40	8 (1.08)	6 (1.21)	2 (0.81)	
40 ≤ x<60	156 (20.99)	95 (19.19)	61 (24.60)	
60 ≤ x<70	253 (34.05)	164 (22.07)	89 (35.89)	
x ≥ 70	326 (43.88)	230 (46.46)	96 (38.71)	
Sex				0.652
Male	474 (63.8)	313 (63.23)	161 (64.92)	
Female	269 (36.2)	182 (36.77)	87(35.08)	
Race				0.004
White	553 (74.43)	356 (71.92)	197 (79.44)	
Black	55 (7.40)	33 (6.67)	22 (8.87)	
Others	135 (18.17)	106 (21.41)	29 (11.69)	
Grade				0.1777
High	280 (37.69)	192 (38.79)	88 (35.48)	
Medium	361 (48.59)	229 (46.26)	132 (53.23)	
Low	93 (12.52)	66 (13.33)	27 (10.89)	
Undifferentiated	9 (1.21)	8 (1.62)	1 (0.40)	
Stage				0.705
0	3 (0.40)	3 (0.6)	0 (0.00)	
I	161 (21.67)	106 (21.41)	55 (22.18)	
II	514 (69.18)	340 (68.69)	174 (70.16)	
III	29 (3.90)	21 (4.24)	8 (3.23)	
IV	36 (4.85)	25 (9.29)	11 (4.44)	
LODDS <sup>*</sup>				0.302
Mean (range)	-1.461 (-2.903-0.000)	-1.47 (-2.903-0.000)	-1.442 (-2.881-0.000)	
RLNs <sup>*</sup>				0.174
Mean (range)	14.070 (1-63)	14.00 (1-63)	14.19 (1-41)	
PLNs <sup>*</sup>				0.823
Mean (range)	1.53 (0-23)	1.56 (0-23)	1.48 (0-13)	
PLR				0.673
Mean (range)	0.14 (0.122 to 0.155)	0.14 (0.115-0.156)	0.14 (0.1154 to 0.1722)	
LNR <sup>*</sup>				0.743
Mean (range)	12.53 (0-56)	12.44 (0-56)	12.71 (0-40)	

<sup>\*</sup>LODDS: Log ((the number of PLNs+0.05)/(the number of negative nodes+0.05)); RLNs: The Number of Lymph Node Examined; PLNs: The number of Positive Lymph Node; LNR: Positive Lymph Node Ratio; PLR: The Number of PLN/RLNs

The current study is the first to evaluate and compare the specific prognostic ability of the number of PLNs, PLR, and LODDS in patients with dECA including SEER clinical data. Moreover, the extensive statistical analysis, which involved 2 different approaches (random survival ROC and ROC curve analysis), demonstrated that the number of PLN, PLR, and LODDS had good prognostic ability. To our knowledge, PLNs have been reported as a prognostic factor for cervical cancer. However, it, as part of TLN, do not fully reflect the state of disease in all situations [49]. Therefore, it's important to take simultaneously PLNs and the number of negative lymph nodes consideration for predicting the prognosis of cervical cancer. LODDS is an intuitive indicator that is reflective of both PLNs and the number of negative lymph nodes and it has been used to predict the prognosis of survival in other cancers. From our study, it is found that LODDS is an independent prognostic factor of dECA and we take -0.94 as the

optimal cutoff point for the LODDS based on ROC curve analysis from the training cohort. What's more, LODDS perform as the unique prominent prognostic indicator of OS for dECA cases after curative surgery. These data confirm the results obtained using LODDS in other gastrointestinal and hepatopancreatic biliary malignancies.

In current study, some limitations should be acknowledged. Firstly, it was a retrospective including SEER data. Second, we did not include the lymph node station in this study avoiding sacrificing the statistical power in present small sample size of current patients, besides previous study showed the position of the lymph node did not affect the survival. Thirdly, other potential confounding factors cannot be excluded, such as postoperative adjuvant therapy. Concerning until now the influences of chemotherapy and other adjuvant therapy on survival of dECA have not been defined, it was not obligatory to

**Table 2:** Univariate Analysis and multivariate analysis in the training cohort.

Variables	Univariate Analysis		Multivariate Analysis	
	Median survival time (95% CI)	P value	HR (95% CI)	P value
Age at diagnosis		0.046 <sup>*</sup>		
x<40	29.0 (10.748-47.252)			
40 ≤ x<60	27.0 (19.420-34.580)			
60 ≤ x<70	22.0 (16.750-27.250)			
x ≥ 70	19.0 (16.942-21.058)			
Sex		0.533		
Male	21 (17.846-24.154)			
Female	20 (15.808-24.192)			
Race		0.629		
White	20.0 (16.881-23.119)			
Black	42 (-)			
Others	21 (15.041-26.959)			
Grade		0.051		
High	35 (18.172-51.828)		reference	
Medium	20 (16.693-23.307)		0.191 (0.083-0.435)	<0.001
Low	21 (16.527-25.473)		0.252 (0.117-0.542)	<0.001
Undifferentiated	8 (0-19.087)		0.274 (0.127-0.590)	0.001
Stage		0.043 <sup>*</sup>		
0	--			
I	29.0 (15.716-42.284)			
II	20.0 (17.019-22.981)			
III	24.0 (11.371-36.629)			
IV	14.0 (9.300-18.700)			
RLN		0.005 <sup>*</sup>		
<5	18.0 (14.530-21.470)			
≥ 5	23.0 (20.203-25.797)			
NLN		<0.001	Reference	
<5	17.0 (12.205-21.795)		1.645 (1.270-2.132)	<0.001
≥ 5	24.0 (20.599-27.401)			
PLN		0.040 <sup>*</sup>		
<1	25.0 (20.485-29.515)			
≥ 1	19.0 (17.129-20.871)			
PLR		0.006 <sup>*</sup>		
<0.05	25 (20.272-29.728)			
≥ 0.05	19 (16.573-21.427)			
LODDS		0.001 <sup>*</sup>	Reference	
<-0.94	24.0 (20.213-27.787)		0.738 (0.574-0.949)	0.018
≥ -0.94	18.0 (15.409-20.591)			
LODDS		<0.001		
<-2.0043	29.0 (19.803-38.197)			
≥ -2.0043	19 (17.155-20.845)			

include these factors.

## Conclusion

In conclusion, LODDS was proved to better predict for lymph node and survival as an independent indicator for OS in dECA after radical surgical resection. Moreover, adequate LN dissection is mandatory for curative surgery of dECA, as well as to achieve accurate staging of the disease and the proper selection of adjuvant treatment.

## Funding Statement

This study was funded by National natural Science foundation (81372578).

## Acknowledgment

The authors sincerely express their thanks to the support and assistance from the colleagues of department of general surgery of



Peking Union Medical College Hospital.

## Ethics Approval and Consent to Participate

**Ethical approval:** All procedures performed in studies involving human participants were in accordance with the ethical standards of the Institutional Review Board (IRB) of Peking Union Medical College Hospital (PUMCH), chairman of IRB member Zhaohui Zhu Research committee and with the 1964 Helsinki declaration and its later amendments or comparable ethical standards.

**Informed consent:** Written informed consent was obtained from all individual participants included in the study

## Authors' Contributions

All authors have read and approved the manuscript. Xiaodong He and Haitao Zhao contributes to the conception and design of the work and revise the work; Xiang Chen and Xueshuai Wan contribute to the analysis data for the work; Wenqin Wang drafting the work and analyze the data.

## References

- Khan SA, Emadossady S, Ladep NG, Thomas HC, Elliott P, Taylor-Robinson SD, et al. Rising trends in cholangiocarcinoma: is the ICD classification system misleading us? *J Hepatol.* 2012;56(4):848-54.
- Deoliveira ML, Schulick RD, Nimura Y, Rosen C, Gores G, Neuhaus P, et al. New staging system and a registry for perihilar cholangiocarcinoma. *Hepatology.* 2011;53(4):1363-71.
- Blechacz B, Komuta M, Roskams T, Gores GJ. Clinical diagnosis and staging of cholangiocarcinoma. *Nat Rev Gastroenterol Hepatol.* 2011;8(9):512-22.
- Khan SA, Davidson BR, Goldin R, Pereira SP, Rosenberg WM, Taylor-Robinson SD, et al. Guidelines for the diagnosis and treatment of cholangiocarcinoma: consensus document. *Gut.* 2002;51:VII-9.
- Pinter M, Hucke F, Zielonke N, Waldhör T, Trauner M, Peck-Radosavljevic M, et al. Incidence and mortality trends for biliary tract cancers in Austria. *Liver Int.* 2014;34(7):1102-8.
- Utada M, Ohno Y, Tamaki T, Sobue T, Endo G. Long-term trends in incidence and mortality of intrahepatic and extrahepatic bile duct cancer in Japan. *J Epidemiol.* 2014;24(3):193-9.
- West J, Wood H, Logan RF, Quinn M, Aithal GP. Trends in the incidence of primary liver and biliary tract cancers in England and Wales 1971-2001. *Br J Cancer.* 2006;94(11):1751-8.
- Patel T. Worldwide trends in mortality from biliary tract malignancies. *BMC Cancer.* 2002;2(1):10.
- Murakami Y, Uemura K, Hayashidani Y, Sudo T, Ohge H, Sueda T. Pancreatoduodenectomy for distal cholangiocarcinoma: prognostic impact of lymph node metastasis. *World J Surg.* 2007;31(2):337-42.
- Murakami Y, Uemura K, Sudo T, Hashimoto Y, Nakashima A, Kondo N, et al. Prognostic Factors After Surgical Resection for Intrahepatic, Hilar, and Distal Cholangiocarcinoma. *Ann Surg Oncol.* 2011;18(3):651-8.
- Qiao QL, Zhang TP, Guo JC, Zhan HX, Zhao JX, Liu YC, et al. Prognostic factors after pancreatoduodenectomy for distal bile duct cancer. *Am Surg.* 2011;77(11):1445-8.
- Ito K, Ito H, Allen PJ, Gonen M, Klimstra D, D'Angelica MI, et al. Adequate lymph node assessment for extrahepatic bile duct adenocarcinoma. *Ann Surg.* 2010;251(4):675-81.
- Kiriyama M, Ebata T, Aoba T, Kaneoka Y, Arai T, Shimizu Y, et al. Prognostic impact of lymph node metastasis in distal cholangiocarcinoma. *Br J Surg.* 2015;102(4):399-406.
- Yoshida T, Matsumoto T, Sasaki A, Morii Y, Aramaki M, Kitano S. Prognostic factors after pancreatoduodenectomy with extended lymphadenectomy for distal bile duct cancer. *Arch Surg.* 2002;137(1):69-73.
- Zhou Z, Li W, Zhang F, Hu K. The value of squamous cell carcinoma antigen (SCCA) to determine the lymph nodal metastasis in cervical cancer: A meta-analysis and literature review. *PLoS One.* 2017;12(12):e0186165.
- Eijsink JJ, Noordhuis MG, ten Hoor KA, Kok M, Hollema H, de Bock GH, et al. The epidermal growth factor receptor pathway in relation to pelvic lymph node metastasis and survival in early-stage cervical cancer. *Hum Pathol.* 2010;41(12):1735-41.
- Cao S, Sun J, Lin S, Zhao L, Wu D, Liang T, et al. HPIP: a predictor of lymph node metastasis and poor survival in cervical cancer. *Onco Targets Ther.* 2017;10:4205-11.
- Ramacciato G, Nigri G, Petrucciani N, Pinna AD, Ravaioli M, Jovine E, et al. Prognostic role of nodal ratio, LODDS, pN in patients with pancreatic cancer with venous involvement. *BMC Surg.* 2017;17(1):109.
- Morales-Oyarvide V, Rubinson DA, Dunne RF, Kozak MM, Bui JL, Yuan C, et al. Lymph node metastases in resected pancreatic ductal adenocarcinoma: predictors of disease recurrence and survival. *Br J Cancer.* 2017;117(12):1874-82.
- Chun YS, Pawlik TM, Vauthey JN. 8<sup>th</sup> Edition of the AJCC Cancer Staging Manual: Pancreas and Hepatobiliary Cancers. *Ann Surg Oncol.* 2018;25(4):845-7.
- Guglielmi A, Ruzzenente A, Campagnaro T, Pachera S, Conci S, Valdegamberi A, et al. Prognostic significance of lymph node ratio after resection of peri-hilar cholangiocarcinoma. *HPB.* 2011;13(4):240-5.
- Pawlik TM, Gleisner AL, Cameron JL, Winter JM, Assumpcao L, Lillemoie KD, et al. Prognostic relevance of lymph node ratio following pancreatoduodenectomy for pancreatic cancer. *Surgery.* 2007;141(5):610-8.
- Kim Y, Spolverato G, Amini N, Margonis GA, Gupta R, Ejaz A, et al. Surgical Management of Intrahepatic Cholangiocarcinoma: Defining an Optimal Prognostic Lymph Node Stratification Schema. *Ann Surg Oncol.* 2015;22(8):2772-8.
- Wang X, Appleby DH, Zhang X, Gan L, Wang JJ, Wan F. Comparison of three lymph node staging schemes for predicting outcome in patients with gastric cancer. *Br J Surg.* 2013;100(4):505-14.
- Kotowicz B, Fuksiewicz M, Kowalska M, Jonska-Gmyrek J, Bidzinski M, Kaminska J. The value of tumor marker and cytokine analysis for the assessment of regional lymph node status in cervical cancer patients. *Int J Gynecol Cancer.* 2008;18(6):1279-84.
- Strnad P, Robova H, Skapa P, Pluta M, Hrehorcak M, Halaska M, et al. A prospective study of sentinel lymph node status and parametrial involvement in patients with small tumour volume cervical cancer. *Gynecol Oncol.* 2008;109(2):280-4.
- Lee CC, Su YC, Hung SK, Chen PC, Huang CI, Huang WL, et al. Recommendation for incorporation of a different lymph node scoring system in future AJCCN category for oral cancer. *Sci Rep.* 2017;7(1):14117.
- Safi AF, Kauke M, Grandoch A, Nickenig HJ, Drebber U, Zöller J, et al. The importance of log odds of positive lymph nodes for locoregional recurrence in oral squamous cell carcinoma. *Oral Oncol.* 2017;72:48-55.
- Xu XL, Cheng H, Tang MS, Zhang HL, Wu RY, Yu Y, et al. A novel nomogram based on LODDS to predict the prognosis of epithelial ovarian cancer. *Oncotarget.* 2017;8(5):8120-30.
- Wen J, Ye F, He X, Li S, Huang X, Xiao X, et al. Development and validation of a prognostic nomogram based on the log odds of positive lymph nodes (LODDS) for breast cancer. *Oncotarget.* 2016;7(15):21046-53.
- Guglielmi A, Ruzzenente A, Campagnaro T, Valdegamberi A, Bagante F, Bertuzzo F, et al. Patterns and prognostic significance of lymph

- node dissection for surgical treatment of perihilar and intrahepatic cholangiocarcinoma. *J Gastrointest Surg.* 2013;17(11):1917-28.
32. Tamandl D, Kaczirek K, Gruenberger B, Koelblinger C, Maresch J, Jakesz R, et al. Lymph node ratio after curative surgery for intrahepatic cholangiocarcinoma. *Br J Surg.* 2009;96(8):919-25.
33. Sakata J, Wakai T, Matsuda Y, Ohashi T, Hirose Y, Ichikawa H, et al. Comparison of Number Versus Ratio of Positive Lymph Nodes in the Assessment of Lymph Node Status in Extrahepatic Cholangiocarcinoma. *Ann Surg Oncol.* 2016;23(1):225-34.
34. Ataseven B, Grimm C, Harter P, Prader S, Traut A, Heitz F, et al. Prognostic value of lymph node ratio in patients with advanced epithelial ovarian cancer. *Gynecol Oncol.* 2014;135(3):435-40.
35. Zhou J, He ZY, Li FY, Sun JY, Lin HX, Wu SG, et al. Prognostic value of lymph node ratio in stage IIIC epithelial ovarian cancer with node-positive in a SEER population-based study. *Oncotarget.* 2016;7(7):7952-9.
36. Spolverato G, Ejaz A, Kim Y, Squires MH, Poultsides G, Fields RC, et al. Prognostic Performance of Different Lymph Node Staging Systems After Curative Intent Resection for Gastric Adenocarcinoma. *Ann Surg.* 2015;262(6):991-8.
37. Aurello P, Petrucciani N, Nigri GR, La Torre M, Magistri P, Tierno S, et al. Log Odds of Positive Lymph Nodes (LODDS): What Are Their Role in the Prognostic Assessment of Gastric Adenocarcinoma? *J Gastrointest Surg.* 2014;18(7):1254-60.
38. Taylor JM. Random survival forest. *J Thoracic Oncol.* 2011;6(12):1974-5.
39. Saha SK, Zhu AX, Fuchs CS, Brooks GA. Forty-Year Trends in Cholangiocarcinoma Incidence in the U.S.: Intrahepatic Disease on the Rise. *Oncologist.* 2016;21(5):594-9.
40. Cereda S, Belli C, Reni M. Adjuvant treatment in biliary tract cancer: To treat or not to treat? *World J Gastroenterol.* 2012;18(21):2591-6.
41. Benson AB 3<sup>rd</sup>, D'Angelica MI, Abbott DE, Abrams TA, Alberts SR, Saenz DA, et al. NCCN Guidelines Insights: Hepatobiliary Cancers, Version 1.2017. *J Natl Compr Canc Netw.* 2017;15(5):563-73.
42. Schwarz RE, Smith DD. Lymph node dissection impact on staging and survival of extrahepatic cholangiocarcinomas, based on U.S. population data. *J Gastrointest Surg.* 2007;11(2):158-65.
43. Edge SB. *AJCC Cancer Staging Manual.* JAMA. 2010;304(15):1726-7.
44. de Jong MC, Hong SM, Augustine MM, Goggins MG, Wolfgang CL, Hirose K, et al. Hilar cholangiocarcinoma: tumor depth as a predictor of outcome. *Arch Surg.* 2011;146(6):697-703.
45. Hong SM, Pawlik TM, Cho H, Aggarwal B, Goggins M, Hruban RH, et al. Depth of tumor invasion better predicts prognosis than the current American Joint Committee on Cancer T classification for distal bile duct carcinoma. *Surgery.* 2009;146(2):250-7.
46. Kawai M, Tani M, Kobayashi Y, Tsuji T, Tabuse K, Horiuchi T, et al. The ratio between metastatic and examined lymph nodes is an independent prognostic factor for patients with resectable middle and distal bile duct carcinoma. *Am J Surg.* 2010;199(4):447-52.
47. Ito K, Ito H, Allen PJ, Gonen M, Klimstra D, D'Angelica MI, et al. Adequate lymph node assessment for extrahepatic bile duct adenocarcinoma. *Ann Surg.* 2010;251(4):675-81.
48. Adsay NV, Basturk O, Altinel D, Khanani F, Coban I, Weaver DW, et al. The number of lymph nodes identified in a simple pancreatoduodenectomy specimen: comparison of conventional vs. orange-peeling approach in pathologic assessment. *Mod Pathol.* 2009;22(1):107-12.
49. Ataseven B, Harter P, Grimm C, Heitz F, Heikaus S, Traut A, et al. The revised 2014 FIGO staging system for epithelial ovarian cancer: Is a subclassification into FIGO stage IVA and IVB justified? *Gynecol Oncol.* 2016;142(2):243-7.